

Organised by

BRITISH JOURNAL OF  
**HOSPITAL  
MEDICINE**

British Journal of  
**SCHOOL  
NURSING**

In association with



# Sickle Cell 2009: support and management of children with sickle cell



Education Centre,  
University College Hospital London  
30th November & 1st December 2009

12 CPD points applied for



MA HEALTHCARE LIMITED

*40 YEARS OF MEDICAL EDUCATION*

## Objectives

**Sickle Cell 2009** brings together leading experts in the fields of haematology, paediatrics, nursing and school nursing, to discuss the central issues and practical management of children with sickle cell.

It is anticipated that participants will benefit from:

- Comprehensive reviews of the biology, causes and symptoms of sickle cell and beta thalassaemia
- Insights on the experiences of mothers of young people living with sickle cell
- An understanding of the roles of the sickle cell counsellor and the school nurse working with sickle cell children
- An opportunity to learn about how children with sickle cell can be supported within the education setting
- Expert opinions on the optimal clinical management of sickle cell patients
- Overviews of advances in bone marrow transplantation and in the development of new therapies for sickle cell
- An opportunity to share and exchange ideas with leading practitioners in the field

## Who should attend?

Day one of the conference is particularly relevant to health professionals working within the education sector, while day two is aimed at all those in the medical professions. However both days will prove interesting and informative to all who work in the care of sickle cell children.

It will be of particular interest to:

- Haematologists
- Paediatricians
- Specialists in public health medicine
- General practitioners
- School nurses and members of school health teams
- Clinical nurse specialists in haematology and haemoglobinopathies
- Nurse practitioners in haematology and haemoglobinopathies
- Public health nurses
- Community nurses
- Commissioners and managers of children's services
- Genetic counsellors
- All trainees in these disciplines

## Monday 30th November 2009

08.15 – 09.15 **Registration and refreshments**

09.15 – 09.20 **Welcome and introduction**

09.20 – 09.50 **An introduction to sickle cell**

**Sherill Gregory**, Specialist Nurse in Sickle Cell and Thalassaemia, Mayday Healthcare NHS Trust, Croydon

09.50 – 10.00 **Discussion**

10.00 – 10.30 **Strokes in children with sickle cell**

**Dr David Rees**, Consultant Haematologist, Kings College Hospital, London

10.30 – 10.40 **Discussion**

10.40 – 11.10 **An introduction to beta-thalassaemia**

**Elaine Miller**, Coordinator, UK Thalassaemia Society, London

11.10 – 11.20 **Discussion**

11.20 – 11.40 **Refreshments**

11.40 – 11.55 **The experiences of mothers of sickle cell children at school**

**Mothers of young people living with sickle cell**

11.55 – 12.05 **Discussion**

12.05 – 12.25 **From school nurse to specialist sickle cell counsellor**

**Barbara Bailey-Squire**, Haemoglobin Disorders Nurse Counsellor, Coventry Sickle Cell Service

12.25 – 12.35 **Discussion**

12.35 – 13.30 **Lunch**

13.30 – 14.15 **Sickle cell and education**

**Professor Simon Dyson**, Professor of Applied Sociology, De Montfort University, Leicester

14.15 – 14.25 **Discussion**

14.25 – 14.55 **Establishing and maintaining good links between schools and the sickle cell voluntary sector**

**Sonia Lindsay**, Chief Executive Officer, OSCAR Birmingham

14.55 – 15.05 **Discussion**

15.05 – 16.25 **Workshops** (30 minutes + 10 minutes discussion each)  
These workshops will run twice each to enable participants to attend both

**1: The role of the school nurse in sickle cell**

**Suzi Crawford**, Specialist Nurse in Haemoglobinopathies, Birmingham Sickle Cell Service

**2: What should be in a school policy for sickle cell?**

**Simon Dyson**, Professor of Applied Sociology, De Montfort University, Leicester

16.25 **Refreshments and close of day one**

## 3 EASY WAYS TO BOOK



Complete and return the registration form overleaf



0207 501 6762



[www.mahealthcarevents.co.uk](http://www.mahealthcarevents.co.uk)

# eII 2009

Tuesday 1st December 2009

08.15 – 09.00 Registration and refreshments

09.00 – 09.30 **Update on the NHS screening programme for haemoglobinopathies**

**Cynthia Gill**, Implementation Manager, NHS Sickle Cell and Thalassaemia Screening Programme

09.30 – 10.00 **Perspectives on effective genetic counselling**

**Margaretha van Mourik**, Lead Genetic Counsellor, West of Scotland Regional Genetic Service

10.00 – 10.30 **Are patients receiving optimal treatment?**

**Dr Moira Dick**, Consultant Community Paediatrician, King's College Hospital and Lambeth PCT, London

10.30 - 10.40 **Discussion**

10.40 – 11.00 Refreshments

## Management of complications

11.00 – 11.20 **Acute painful crises**

**Neill Westerdale**, Advanced Nurse Practitioner in Haemoglobinopathies, Guy's and St Thomas' Hospitals NHS Foundation Trust, London

11.20 – 11.40 **Pulmonary hypertension**

**Dr Simon Gibbs**, Consultant Cardiologist, National Pulmonary Hypertension Service, Hammersmith Hospital & Imperial College London

11.40 – 12.00 **Renal complications**

**Dr Claire Sharpe**, Clinical Senior Lecturer and Honorary Senior Consultant in Renal Medicine, King's College London

12.00 – 12.20 **Chelation therapy and its alternatives**

**Professor John Porter**, Professor of Haematology and Consultant Haematologist, University College London Hospitals

12.20 – 12.40 **Chronic leg ulceration**

**Sharon Robinson**, Clinical Nurse Specialist in Haemoglobinopathies, University College London Hospitals

12.40 – 12.50 **Discussion**

12.50 – 13.40 **Lunch**

13.40 - 14.10 **Managing the transition from paediatric to adult care**

**Dr Jo Howard**, Consultant Haematologist & **Dr Baba Inusa**, Consultant Paediatrician, Guy's and St Thomas' Hospitals NHS Trust, London

14.10 – 14.40 **Psychological support for patients in transition to adult care**

**Dr Nicky Thomas**, Consultant Health Psychologist, Guy's and St Thomas' NHS Foundation Trust, London

14.40 - 14.50 **Discussion**

14.50 – 15.10 Refreshments

15.10 - 15.40 **Developments in specialist local service provision for sickle cell**

**Dr Lorna Bennett**, Clinical Service Manager, NHS Islington, London & Trustee, Sickle Cell Society

15.40 – 16.10 **Advances in bone marrow transplantation**

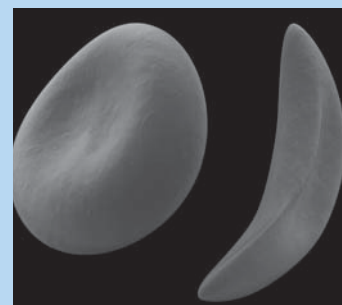
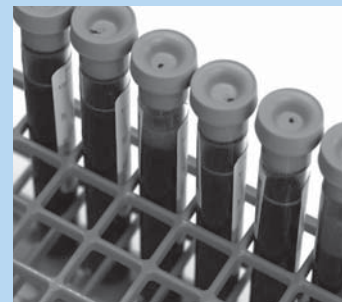
**Dr Phil Darbyshire**, Consultant Paediatric Haematologist, Birmingham Children's Hospital NHS Trust

16.10 – 16.40 **Current and emerging therapies**

**Professor Swee Lay Thein**, Professor of Molecular Haematology & Head of Division of Gene and Cell Based Therapy, King's College Hospitals NHS Foundation Trust, London

16.40 – 17.00 **Discussion and evaluations**

17.00 **Close of conference**



Organised by

BRITISH JOURNAL OF  
**HOSPITAL  
MEDICINE**

British Journal of  
**SCHOOL  
NURSING**

