

Organised by

BRITISH JOURNAL OF  
**HOSPITAL  
MEDICINE**

Supported by



The 11th national conference

# Dementias 2009

A review and update on current developments in the dementias; in the fields of research, investigations, clinical care and service and policy issues

The Institute of Engineering & Technology, Savoy Place, London

26th & 27th February 2009

## PROGRAMME ADVISORS

- **Professor Tom Arie, CBE**, Professor Emeritus of Health Care of the Elderly, University of Nottingham
- **Professor Alistair Burns**, Head of School of Psychiatry & Behavioural Sciences, Professor of Old Age Psychiatry, University of Manchester

**CPD APPROVED**



MA HEALTHCARE LIMITED

*40 YEARS OF MEDICAL EDUCATION*

# Dementias 2009: the 11th National

## Objectives

**Dementias 2009: The 11th annual national dementia conference** will provide participants with:

- An update on on-going clinical, research, organisational and policy developments that are taking place in the field of dementia
- A forum to share and exchange views with eminent faculty speakers
- A chance to look at progress in old age psychiatry and its service provision
- An update on the management of clinical conditions and practices associated with dementia, e.g. agitation and depression
- The chance to debate and discuss 'alternative therapies' for dementia

## Who should attend?

**Dementias 2009** is aimed at professionals involved with dementia including:

- Old age psychiatrists
- Neurologists
- Geriatricians
- Physicians with an interest in the elderly
- GPs
- Directors of health
- Policy makers
- Mental health service managers
- Community mental health teams
- Day care managers
- Home care managers
- Social care workers
- Counsellors
- Researchers
- Community nurses
- Hospital nurses
- Practice nurses

## Day 1 – Thursday, 26th February 2009

08.00 – 09.05	<b>Registration and refreshments</b>
09.05 – 09.10	<b>Welcome and introduction:</b> <b>Tom Arie C.B.E</b> Professor Emeritus of Health Care of the Elderly, Nottingham University & <b>Alistair Burns</b> Deputy Dean (Clinical Affairs) and Professor of Old Age Psychiatry, University of Manchester
	<b>Chair: Alistair Burns</b>
09.10 – 09.50	<b>KEYNOTE ADDRESS: Dementia and consciousness: philosophical aspects</b> <b>Ray Tallis</b> Professor of Geriatric Medicine, University of Manchester
09.50 – 10.00	<b>Discussion</b>
10.00 – 10.40	<b>Geriatric psychiatry at the Bethlem-Maudsley Hospital: the early years</b> <b>Claire Hilton</b> Consultant in Old Age Psychiatry, Northwick Park Hospital, Harrow
10.40 – 10.50	<b>Discussion</b>
10.50 – 11.20	<b>Refreshments and exhibition viewing</b>
11.20 – 11.45	<b>Mild cognitive impairment</b> <b>Peter Nestor</b> Neurologist and Research Associate, University of Cambridge
11.45 – 11.55	<b>Discussion</b>
11.55 – 12.20	<b>Imaging</b> <b>John O'Brien</b> Professor of Old Age Psychiatry, Institute for Ageing and Health, Newcastle University
12.20 – 12.45	<b>Agitation</b> <b>Peter Bentham</b> Consultant in Working Age Dementia, Queen Elizabeth Psychiatric Hospital, Birmingham
12.45 – 12.55	<b>Discussion</b>
12.55 – 14.00	<b>Lunch and exhibition viewing</b>
	<b>SESSION I: NON ALZHEIMER DEMENTIAS</b> <b>Afternoon chair: David Jolley</b> Consultant Psychiatrist & Honorary Reader, PSSRU, Manchester University
14.00 – 14.25	<b>Parkinson's disease and dementia</b> <b>Iracema Leroi</b> Consultant in Old Age Psychiatry, Senior Research Fellow in PD & Honorary Senior Lecturer, Lancashire Care Foundation Trust and University of Manchester
14.25 – 14.35	<b>Discussion</b>
14.35 – 15.00	<b>Lewy body dementia</b> <b>Jane Byrne</b> Senior Lecturer and Honorary Consultant Psychiatrist, University of Manchester
15.00 – 15.10	<b>Discussion</b>
15.10 – 15.35	<b>Refreshments and exhibition viewing</b>
15.35 – 16.00	<b>Other dementias</b> <b>Anoop Varma</b> Consultant Neurologist, Salford Royal Hospital, Manchester
16.00 – 16.10	<b>Discussion</b>
16.10 – 17.10	<b>'The best paper on dementias that I have read in the past year'</b> <b>All speakers and chairmen on day 1 to give an example each</b>
17.10 – 19.00	<b>Drinks reception</b>

# ational Conference

Day 2 – Friday, 27th February 2009

09.00 – 09.30 **Registration & refreshments**

**Chair: Professor Joe Herzberg**

Consultant Old Age Psychiatrist, East London NHS Foundation Trust, Mile End Hospital and Emeritus Professor of Postgraduate Medical Education, Queen Mary, University of London

09.30 – 10.05 **The National Dementia Strategy: where now?**

**Sube Banerjee**

Professor of Mental Health & Ageing, Institute of Psychiatry, King's College, London

10.05 – 10.15 **Discussion**

10.15 – 10.40 **Psychotherapy and dementia**

**Roger Wesby**

Consultant Old Age Psychiatrist, Norfolk and Waveney Mental Health Partnership, Norwich

10.40 – 10.50 **Discussion**

10.50 – 11.20 **Refreshments and exhibition viewing**

11.20 – 11.45 **An overview of nursing care of people with dementia**

**John Keady**

Professor, University of Manchester and Greater Manchester West Mental Health NHS Foundation Trust

11.45 – 11.55 **Discussion**

11.55 – 12.30 **An update on drugs in clinical trial**

**Roy Jones**

Professor and Director of RICE, The Research Institute for the Care of Older People, Bath

12.30 – 12.40 **Discussion**

12.40 – 13.40 **Lunch and exhibition viewing**

**Afternoon chair: Tom Arie C.B.E**

Professor Emeritus of Health Care of the Elderly, Nottingham University

13.40 – 14.05 **Ethnic minorities and dementia**

**Nitin Purandare**

Senior Lecturer and Honorary Consultant, Wythenshawe Hospital, Manchester

14.05 – 14.15 **Discussion**

14.15 – 14.40 **Liaison psychiatry**

**John Holmes**

Senior Lecturer and Consultant Psychiatrist, University of Leeds

14.40 – 14.50 **Discussion**

**SESSION II: ALTERNATIVE TREATMENTS FOR DEMENTIA**

14.50 – 15.15 **Complementary medicine**

**Edzard Ernst**

Professor and Laing Chair of Complementary Medicine, Peninsula Medical School, Exeter

15.15 – 15.40 **Plant power: the potential of phytotherapeutics**

**Professor Elaine Perry**

Professor of Neurochemical Pathology, Institute for Ageing and Health, Newcastle University

15.40 – 16.30 **Discussion: case histories and opinions on alternative treatments**

**Moderated by Claire Hilton**

Consultant in Old Age Psychiatry, Northwick Park Hospital, Harrow &

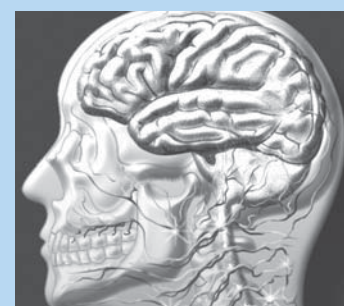
**Jane Byrne**

Senior Lecturer and Honorary Consultant Psychiatrist, University of Manchester

16.30 – 16.40 **Closing comments**

16.40 **Refreshments**

*The views of the speakers are not necessarily those of the sponsoring companies*



Organised by

BRITISH JOURNAL OF  
**HOSPITAL  
MEDICINE**



MA HEALTHCARE LIMITED

